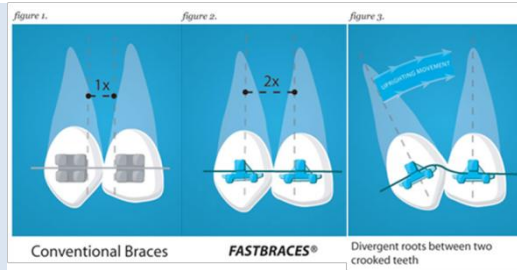


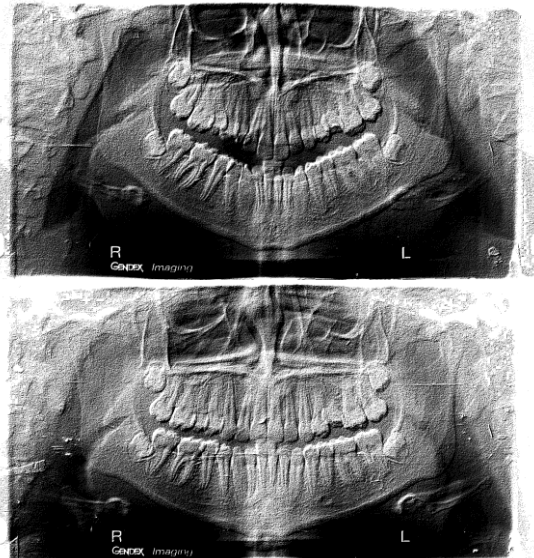
# Case Examples

5  
M  
O  
N  
T  
H  
S



The triangular braces used at Fastbraces® aim to upright the root of the tooth from the beginning of the treatment. If the root is upright, then the tooth becomes straight. In order to do this, a big enough square wire is needed to be inserted in the braces in order to torque and upright the root. The conventional braces are typically square in shape and don't provide for enough room between them (figure 1). If the square braces are replaced with triangular ones, the distance between the braces doubles (figure 2). By doubling the distance, the flexibility of the square wire increases eight times ( $2^3 = 8$ ). Therefore, at Fastbraces® we are able to engage a square wire comfortably and easily between the braces in order to upright the root from the beginning of the treatment and complete treatment in about a year or as little as 6 months in some cases. (figure 3)

9  
M  
O  
N  
T  
H  
S



12  
M  
O  
N  
T  
H  
S

